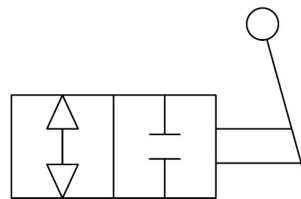




Inline 2 way ball valves to open and close oil flow in the system.

- Maximum pressure up to 500BAR.
- Heavy duty steel body.
- Mounted inline in any system.

Hydraulic Schematic



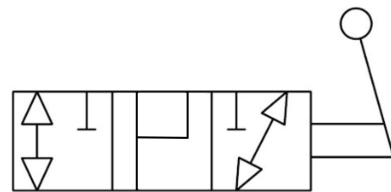
Code	Ports (BSPP)	Flow L/Min)	Max Pressure (BAR)	Overall Length (mm)
KHB-1/8	1/8"	15	500	69
KHB-1/4	1/4"	25	500	69
KHB-3/8	3/8"	35	500	72
KHB-1/2	1/2"	60	400	83
KHB-3/4	3/4"	100	315	95
KHB-1	1"	150	315	113
KHB-1-1/4	1-1/4"	150	315	110
KHB-1-1/2	1-1/2"	150	315	130
KHB-2	2"	180	315	140



Inline 3 way ball valves to direct oil flow between multiple systems.

- Maximum pressure up to 500BAR.
- Heavy duty steel body.
- Mounted inline in any system.

Hydraulic Schematic



Code	Ports (BSPP)	Flow (L/Min)	Max Pressure (BAR)	Overall Length (mm)
KHB3K-1/8-L	1/8"	15	500	69
KHB3K-1/4-L	1/4"	25	500	69
KHB3K-3/8-L	3/8"	35	500	72
KHB3K-1/2-L	1/2"	60	400	83
KHB3K-3/4-L	3/4"	100	315	95
KHB3K-1-L	1"	150	315	113
KHB3K-1-1/4-L	1-1/4"	150	315	110
KHB3K-1-1/2-L	1-1/2"	150	315	130
KHB3K-2-L	2"	180	315	140